

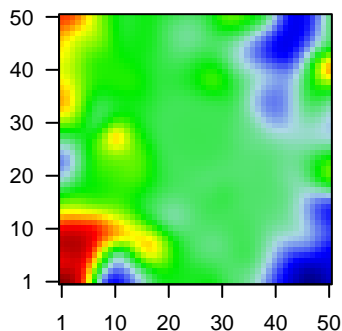
MPI-109

Global Summary

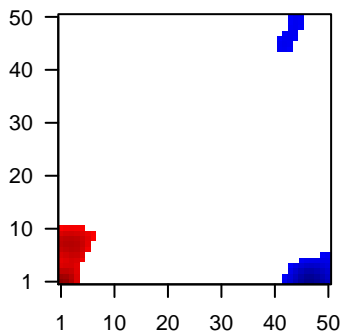
%DE = 0.06
 # genes with fdr < 0.2 = 657 (442 + / 215 -)
 # genes with fdr < 0.1 = 496 (337 + / 159 -)
 # genes with fdr < 0.05 = 340 (231 + / 109 -)
 # genes with fdr < 0.01 = 241 (171 + / 70 -)
 # genes in genesets = 13152

<FC> = 0
 <t-score> = -0.04
 <p-value> = 0.24
 <fdr> = 0.94

Portrait



Regulated Metagenes



Global Genelist

Rank	ID	log(FC)	fdr	p-value	Description
1	39318_at	-1.93	2e-16	2e-13	46 x 49 T cell leukemia/lymphoma 1A [Source:HGNC Symbol;Acc:HGNC:10000]
2	205719_s_at	2.38	2e-16	2e-13	34 x 28 phenylalanine hydroxylase [Source:HGNC Symbol;Acc:HGNC:10000]
3	206626_x_at	2.54	2e-16	2e-13	10 x 27 SSX family member 1 [Source:HGNC Symbol;Acc:HGNC:10000]
4	207325_x_at	2.83	2e-16	2e-13	10 x 27 MAGE family member A1 [Source:HGNC Symbol;Acc:HGNC:10000]
5	207599_at	2.71	2e-16	2e-13	16 x 7 matrix metalloproteinase 20 [Source:HGNC Symbol;Acc:HGNC:10000]
6	207666_x_at	2.69	2e-16	2e-13	10 x 27 SSX family member 3 [Source:HGNC Symbol;Acc:HGNC:10000]
7	209138_x_at	-1.32	2e-16	2e-13	41 x 42 immunoglobulin lambda constant 2 [Source:HGNC Symbol;Acc:HGNC:10000]
8	209374_s_at	-2.36	2e-16	2e-13	0 x 22 immunoglobulin heavy constant mu [Source:HGNC Symbol;Acc:HGNC:10000]
9	209995_s_at	-1.92	2e-16	2e-13	46 x 49 T cell leukemia/lymphoma 1A [Source:HGNC Symbol;Acc:HGNC:10000]
10	210394_x_at	2.78	2e-16	2e-13	10 x 27 SSX family member 6, pseudogene [Source:HGNC Symbol;Acc:HGNC:10000]
11	210497_x_at	2.55	2e-16	2e-13	10 x 27 SSX family member 3 [Source:HGNC Symbol;Acc:HGNC:10000]
12	211425_x_at	3.12	2e-16	2e-13	10 x 27 SSX family member 6, pseudogene [Source:HGNC Symbol;Acc:HGNC:10000]
13	212085_at	-0.98	2e-16	2e-13	39 x 34 solute carrier family 25 member 6 [Source:HGNC Symbol;Acc:HGNC:10000]
14	212827_at	-1.96	2e-16	2e-13	41 x 44 immunoglobulin heavy constant mu [Source:HGNC Symbol;Acc:HGNC:10000]
15	213831_at	-1.76	2e-16	2e-13	49 x 16 major histocompatibility complex, class II, DQ alpha 1 [Source:HGNC Symbol;Acc:HGNC:10000]
16	214254_at	2.78	2e-16	2e-13	11 x 27 MAGE family member A4 [Source:HGNC Symbol;Acc:HGNC:10000]
17	214677_x_at	-1.19	2e-16	2e-13	41 x 42 immunoglobulin lambda constant 2 [Source:HGNC Symbol;Acc:HGNC:10000]
18	214777_at	2.61	2e-16	2e-13	10 x 5 immunoglobulin kappa variable 4-1 [Source:HGNC Symbol;Acc:HGNC:10000]
19	215121_x_at	-1.45	2e-16	2e-13	41 x 42 immunoglobulin lambda constant 2 [Source:HGNC Symbol;Acc:HGNC:10000]
20	215379_x_at	-1.91	2e-16	2e-13	41 x 42 immunoglobulin lambda constant 2 [Source:HGNC Symbol;Acc:HGNC:10000]

Global Geneset Analysis

Rank	GSZ	p-value	#all	Geneset
<i>Overexpressed</i>				
1	13.04	NULL	589	Colon Cancer,TCGA-expr_kmeans_E_CIMP_H_UP_Cluster4_DN
2	12.56	NULL	166	HM HALLMARK_INTERFERON_GAMMA_RESPONSE
3	12.47	NULL	72	ReferenceSignatures_3.1_Interferon-inducible
4	12.44	NULL	556	Chr Chr X
5	12.13	NULL	255	GSEA C2HELLER_SILENCED_BY_METHYLATION_UP
6	12.04	NULL	37	Pneumonia,veeney_viral_up
7	11.87	NULL	76	HM HALLMARK_INTERFERON_ALPHA_RESPONSE
8	11.42	NULL	62	GSEA C2BROWNE_INTERFERON_RESPONSIVE_GENES
9	11.1	NULL	26	GSEA C2MOSERLE_IFNA_RESPONSE
10	11.08	NULL	40	GSEA C2FARMER_BREAST_CANCER_CLUSTER_1
11	10.89	NULL	13	Immunotherapy,Angelova_CRC_MSS^neocantigens
12	10.85	NULL	73	GSEA C2HECKER_IFNB1_TARGETS
13	10.59	NULL	317	Cancer SPANG_BCL6-index2
14	10.48	NULL	265	GSEA C2WALLACE_PROSTATE_CANCER_RACE_UP
15	10.47	NULL	23	GSEA C2ZHANG_INTERFERON_RESPONSE
16	10.33	NULL	57	Pneumonia,Turnham_viral_UP
17	10.07	NULL	122	Pneumonia,erre_IMS_influenza_meta_signature
18	9.9	NULL	16	GSEA C2BOWIE_RESPONSE_TO_TAMOXIFEN
19	9.89	NULL	66	BP interferon-gamma-mediated signaling pathway
20	9.62	NULL	906	Lymphoma,SPANG_BCR DN
<i>Underexpressed</i>				
1	-9.48	NULL	21	BP phagocytosis, recognition
2	-9.08	NULL	44	MF antigen binding
3	-8.74	NULL	16	MF immunoglobulin receptor binding
4	-8.04	NULL	19	BP positive regulation of B cell activation
5	-7.49	NULL	18	Lymphoma,WRIGHT_ABC UP
6	-7.22	NULL	72	GSEA C2SCHUHMACHER_MYC_TARGETS_UP
7	-6.76	NULL	52	BP complement activation, classical pathway
8	-6.62	NULL	11	MF peptidoglycan binding
9	-6.3	NULL	78	Melanoma,irosh_CAF-cell specific genes
10	-6.17	NULL	32	ReferenceSignatures_1.1_Plasma Cells
11	-6.15	NULL	21	MF phosphatidylcholine binding
12	-6.04	NULL	184	Chr Chr 18
13	-6.03	NULL	99	Lymphoma,Sha_BL UP
14	-5.96	NULL	105	ReferenceSignatures_2.4_Ribosomal proteins
15	-5.89	NULL	196	HM HALLMARK_EPITHELIAL_MESENCHYMAL_TRANSITION
16	-5.7	NULL	197	GSEA C2NABA_CORE_MATRISOME
17	-5.56	NULL	174	BP rRNA processing
18	-5.53	NULL	116	CC blood microparticle
19	-5.44	NULL	190	HM HALLMARK_MYC_TARGETS_V1
20	-5.4	NULL	561	Colon Cancer,Track_CRC_TCGA_group.over_C_normal_DN

p-values

